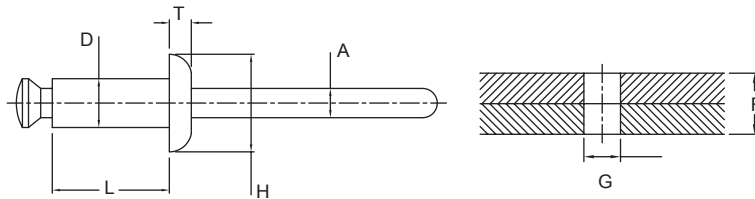


RCCN 日成NCR型塑胶铆钉 Nylon Clinch Rivet



材质：UL合格之NYLON66(黑色).
 防火等级:94V-2, 不易老化, 绝缘度高
 备注：-1:黑色,-2白色,-3灰色,-4浅褐色
 Material：NYLON66 UL approved.
 Fireproof 94V-2, Good quality
 Remarks：-1:black,-2 white,-3gray,-4 light brown



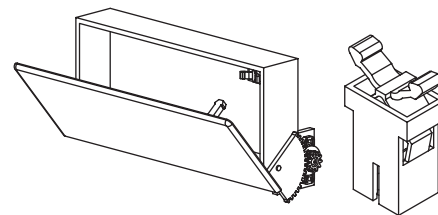
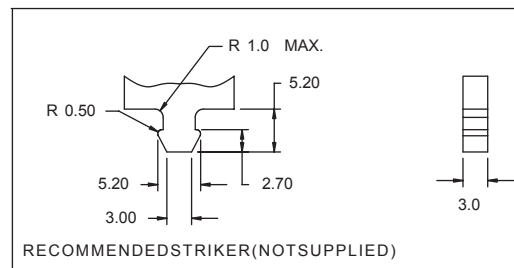
单位/Unit:mm

| 型号 Item No. | 孔径G HoleDia | 适用板厚F PanelThick | D | L | H | T | A | 承受力 Supporting strength | 破坏力 Destroy strength | 包装 Packing pcs |
|----------------|----------------|---------------------|-----|------|------|-----|-----|----------------------------|-------------------------|-------------------|
| NCR32-1 | 3.3 | 1.0-3.5 | 3.2 | 6.4 | 6.4 | 1.4 | 2.1 | 12kg | 20kg | 1000 |
| NCR32-2 | 3.3 | 3.5-6.5 | 3.2 | 9.6 | 6.4 | 1.4 | 2.1 | 12kg | 20kg | 1000 |
| NCR32-3 | 3.3 | 3.5-9.5 | 3.2 | 12.7 | 6.4 | 1.4 | 2.1 | 12kg | 20kg | 1000 |
| NCR40-1 | 4.1 | 1.0-3.5 | 4.0 | 6.4 | 8.0 | 1.8 | 2.4 | 18kg | 25kg | 1000 |
| NCR40-2 | 4.1 | 3.5-6.0 | 4.0 | 9.6 | 8.0 | 1.8 | 2.4 | 18kg | 25kg | 1000 |
| NCR40-3 | 4.1 | 6.0-9.0 | 4.0 | 12.7 | 8.0 | 1.8 | 2.4 | 18kg | 25kg | 1000 |
| NCR48-1 | 4.9 | 1.5-4.5 | 4.8 | 8.0 | 9.6 | 2.0 | 2.8 | 28kg | 40kg | 500 |
| NCR48-2 | 4.9 | 4.5-7.0 | 4.8 | 11.2 | 9.6 | 2.0 | 2.8 | 28kg | 40kg | 500 |
| NCR48-3 | 4.9 | 7.5-10.5 | 4.8 | 14.4 | 9.6 | 2.0 | 2.8 | 28kg | 40kg | 500 |
| NCR56-1 | 5.7 | 2.0-5.0 | 5.6 | 9.6 | 12.0 | 2.2 | 3.4 | 40kg | 65kg | 500 |
| NCR56-2 | 5.7 | 5.0-8.0 | 5.6 | 12.7 | 12.0 | 2.2 | 3.4 | 40kg | 65kg | 500 |
| NCR56-3 | 5.7 | 8.0-11.5 | 5.6 | 15.9 | 12.0 | 2.2 | 3.4 | 40kg | 65kg | 500 |

RCCN 日成DL型尼龙门扣 Door Latch



DL-1



型号 PartNo: DL-1

